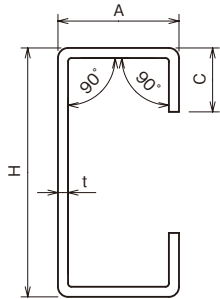
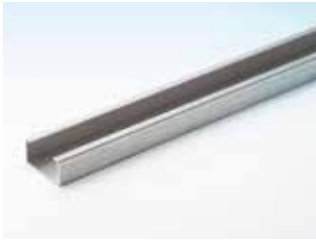


C形鋼



C形鋼 SUS304 <2B、外面 HL・SPV 仕上げ>

サイズ(mm) t×A×H×C	長さ mm	重量 kg/本	仕上	
			2B	HL SPV
2×20× 40× 8	6,000	8.28	●	●
2×20× 52× 8	6,000	9.48	●	●
2×20× 60× 8	6,000	10.2	●	●
2×20× 70× 8	6,000	11.2	●	●
2×30× 60×10	6,000	12.5	●	●
2×40× 80×14.5	6,000	17.2	●	●
2×45× 75×15	6,000	17.8	●	●
2×50×100×19.5	6,000	22.0	●	●
2×60×120×19.5	6,000	25.8	●	●
4×30× 60×10	6,000	22.9	●	
4×40× 80×15	6,000	32.5	●	
4×50×100×20	6,000	42.0	●	

●...2B ●...外面 HL SPV仕上げ