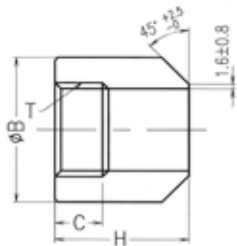


単位:mm

ボス



呼び径(A)	呼び径(B)	T	C	H	B
6	1/8	Rc 1/8	9	25.9	18
8	1/4	Rc 1/4	13	25.9	22
10	3/8	Rc 3/8	13	27.5	26
15	1/2	Rc 1/2	17	32.2	32
20	3/4	Rc 3/4	19	36.8	38
25	1	Rc1	22	41.6	46
32	1 1/4	Rc1 1/4	24	43.2	55
40	1 1/2	Rc1 1/2	24	44.8	65
50	2	Rc2	28	57.3	75
65	2 1/2	Rc2 1/2	33	58.9	95
80	3	Rc3	36	60.5	110