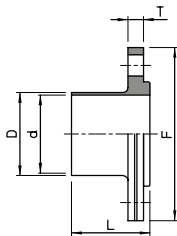
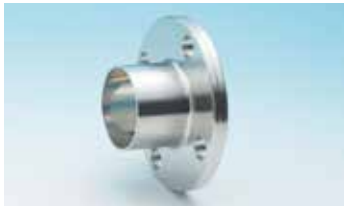


# 固定フランジ SF-F (L)



単位:mm

サイズ	D	d	F	L	T	重量(kg)
1.0S	25.4	23.0	80.0	48.0	9.5	0.36
1.5S	38.1	35.7	94.0	48.0	9.5	0.49
2.0S	50.8	47.8	106.0	48.0	9.5	0.60
2.5S	63.5	59.5	119.0	50.0	11.5	0.86
3.0S	76.3	72.3	132.0	50.0	11.5	1.01
3.5S	89.1	85.1	146.0	50.0	11.5	1.20
4.0S	101.6	97.6	159.0	50.0	11.5	1.37
4.5S	114.3	108.3	174.0	70.0	13.5	2.08
5.0S	139.8	133.8	200.0	70.0	13.5	2.49
6.0S	165.2	159.2	225.0	70.0	13.5	2.95