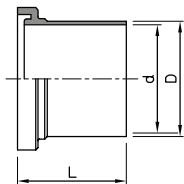
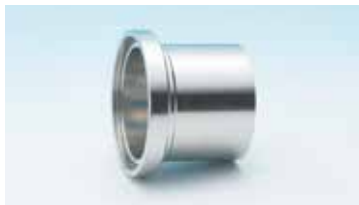


ラップジョイント SF-L (L)



単位:mm

サイズ	D	d	L	重量(kg)
1.0S	25.4	23.0	48.0	0.06
1.5S	38.1	35.7	48.0	0.10
2.0S	50.8	47.8	48.0	0.11
2.5S	63.5	59.5	50.0	0.23
3.0S	76.3	72.3	50.0	0.28
3.5S	89.1	85.1	50.0	0.33
4.0S	101.6	97.6	50.0	0.37
4.5S	114.3	108.3	70.0	0.82
5.0S	139.8	133.8	70.0	1.02
6.0S	165.2	159.2	70.0	1.20