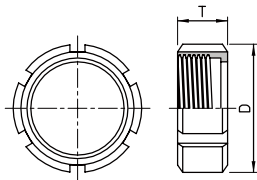
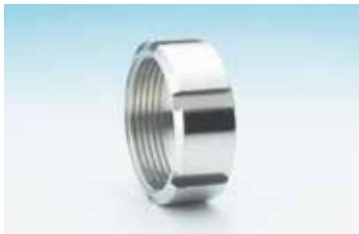


丸ナット R-NUT (溝付)



単位:mm

サイズ	D	T	重量 (kg)
1.0S	48.0	30.0	0.13
1.5S	64.0	30.0	0.16
2.0S	77.0	30.0	0.18
2.5S	91.0	30.0	0.30
3.0S	106.0	30.0	0.44
4.0S	138.0	38.0	1.11